



国产卫星地质矿产业务化应用平台

Operational Application Platform of Geology and Mineral Resources Based on China's Domestic Satellites

在高分专项、资源一号 02C 卫星工程等项目支持下，中国国土资源航空物探遥感中心建立了由数据采集子系统、数据处理子系统、遥感地质解译子系统、基础数据支撑子系统、任务管控子系统、业务运行管理子系统等组成的国产卫星地质矿产业务化应用平台，初步实现了数据采集、处理、管理、应用与服务全流程的业务化运行，具备每天 800 景高精度正射影像产品自动化生产能力，可实现最大 280 万平方千米的覆盖能力。2014 年以来，基于该平台，向 20 多省市 53 家地勘单位分发数据 12.6 万景，有效支撑了矿产资源勘查、矿产资源开发环境遥感监测以及地质灾害调查与监测等业务开展。随着后续计算、存储能力提升以及专业应用模块完善，国产卫星地质矿产业务化应用平台将为地质矿产各领域提供更加优质的数据服务和技术支持。

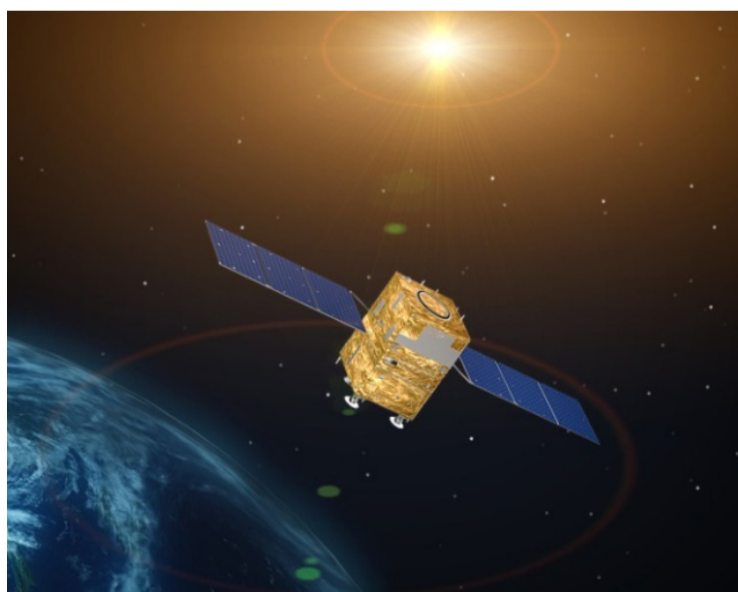
Supported by the special project for the high-definition earth observation system (HDEOS), ZY-1 0 2C satellite engineering and other projects, China Aero Geophysical Survey and Remote Sensing Center for Land and Resources (AGRS) established an operational application platform of geology and mineral resources based on China's domestically made satellites which includes data acquisition subsystem, data processing subsystem, geological remote sensing interpretation subsystem, basic data supporting subsystem, task control subsystem, operation management subsystem and so on, initially achieved the business operation on the whole from data acquisition, processing, management to application and service ,with an automation production capacity of high accuracy ortho image product 800 scene per day, can achieve maximum coverage of 2800000 square kilometers. Since 2014, based on the platform, 126000 images have been distributed to 53 organizations of geological exploration in 20 more provinces and cities, effectively supporting the mineral resources exploration, mineral resources development environment monitoring, geohazards survey and monitoring, etc.. With the upgrades of follow-up calculation, storage capacity and improvements of professional application modules, the platform will provide more quality data services and technical support for the field of geological and mineral resources.

ZY-1 02C 卫星有效载荷参数：

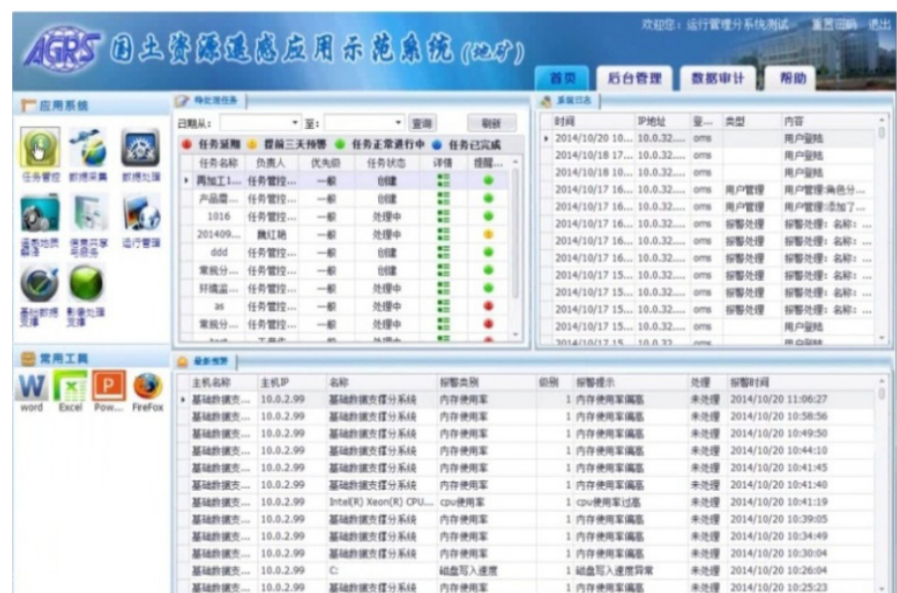
光谱范围：全色 0.51 ~ 0.85 μ m，多光谱 0.52 ~ 0.59 μ m；
0.63 ~ 0.69 μ m；0.77 ~ 0.89 μ m，HR 0.50 ~ 0.80 μ m
空间分辨率：全色 5m，多光谱 10m，HR 2.36m
幅宽：PMS 相机 60km，HR 相机 54km
侧摆能力：PMS 相机 $\pm 32^\circ$ ，HR 相机 $\pm 25^\circ$
重访时间：3 天

ZY-1 02C specifications:

Spectral Range : Pan 0.51 ~ 0.85 μ m , Multispectral 0.52 ~ 0.59 μ m; 0.63 ~ 0.69 μ m; 0.77 ~ 0.89 μ m, HR 0.50 ~ 0.80 μ m
Resolution : Pan 5m, Multispectral 10m, HR 2.36m
Width : PMS 60km, HR 54 km
Off-nadir Angle : PMS $\pm 32^\circ$, HR $\pm 25^\circ$
Revisit Frequency : 3 days



资源一号 02C 卫星
ZY-1 02C Satellite



应用平台入口
Portal of the Platform